

VR 120 - VR 160

VR 200 - VR 400


Išcentriniai ventiliatoriai

Radial duct fans

Radial Ventilatoren

Центробежные вентиляторы



Išcentriniai ventiliatoriai, skirti vėdinimo ir oro kondicionavimo sistemoms. Naudojami oro tiekimui. Nenaudojami užteršto oro, agresyvių, sprogių dujų transportavimui.

Sparnuotė: į priekį lenktais sparneliais, cinkuoto plieno.

Variklis: išorinis rotorius, tiesioginė pavara, integruota termokontaktinė variklio apsauga, ilgai tarnaujantys nereikalaujantys priežiūros guoliai.

Korpusas: iš cinkuotos skardos.



Zentrifugalventilatoren, für Lüftungs- und Klimaanlage bestimmt. Sie werden für Zuluft verwendet. Nicht geeignet für die Beförderung von verschmutzter Luft, aggressiven, explosiven Gasen.

Laufgrad ist vorwärts gekrümmt, aus verzinktem Stahl.

Der Motor: Außenrotor, Direktantrieb, integrierter Thermokontakt-Motorschutz, dauerhafte, keine Pflege erfordernde Lager.

Das Gehäuse: aus verzinktem Blech.



Centrifugal fans for ventilation and air conditioning systems. Used for air supply. Not suitable for polluted air, aggressive and explosive gases.

Impeller with forward curved blades made of galvanized steel.

Motor: external rotor, motor protection built-in thermal-contact, free-maintenance ball bearings.

Housing: made of galvanized steel.



Центробежные вентиляторы для систем вентиляции и кондиционирования. Эксплуатируются в целях подачи воздуха. Не используются при транспортировке загрязнённого воздуха, агрессивных, взрывоопасных газов

Крыльчатка: загнутые вперёд лопатки, оцинкованная сталь.

Двигатель: наружный ротор, прямая передача, встроенная термодатная защита двигателя, не требующие ухода подшипники с длительным сроком службы.

Корпус: оцинкованная жельсть.

Accessories



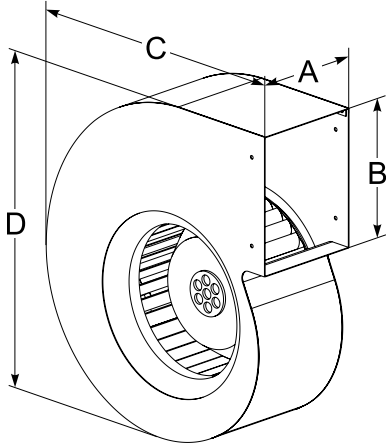
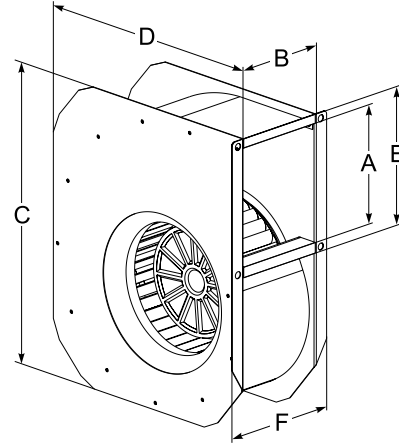
TGRV
p. 143



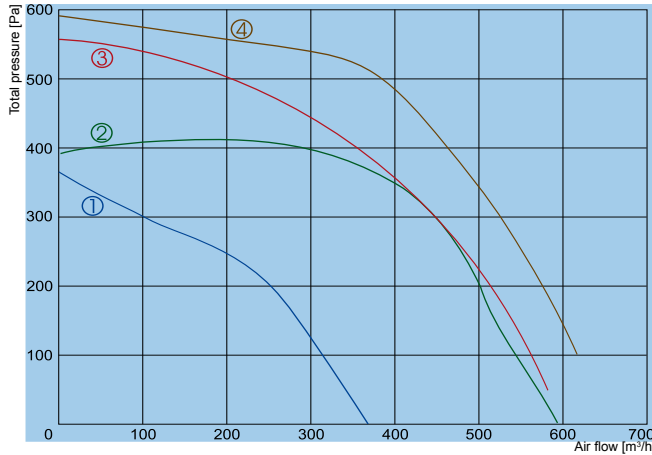
TGRT
p. 144



MTY
p. 146

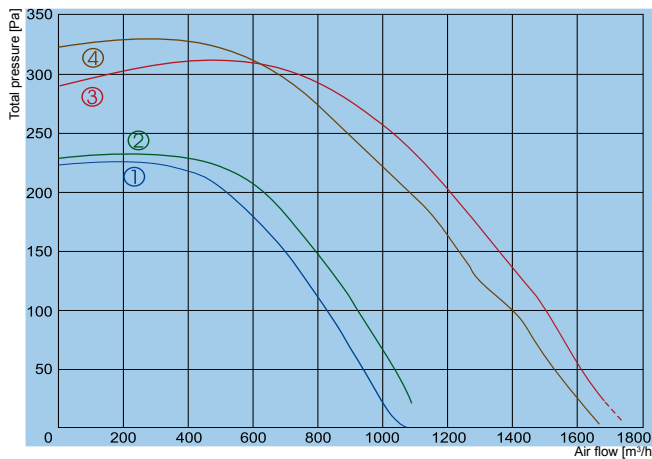
VR 120 - VR 160

VR 200 - VR 400


Type	Dimensions [mm]					
	A	B	C	D	E	F
VR 120-2c L1	99	68,4	169,3	179,2	-	-
VR 140-2d L1	115	105	217	245,5	-	-
VR 160-2a L1	98	94,4	224,2	248,2	-	-
VR 160-2b L1	98	94,4	224,2	248,2	-	-
VR 200-4 L1/L3	156	125	395	330	182	165
VR 225-4 L1/L3	168	140	420	354	194	180
VR 250-4 L1/L3	200	155	475	395	228	207
VR 280-4 L1/L3	207	175	515	436	240	215
VR 315-4 L1/L3	250	194	594	493	281	246
VR 355-4 L3	280	220	668	550	309	272
VR 400-4 L3	313	246	749	617	349	298



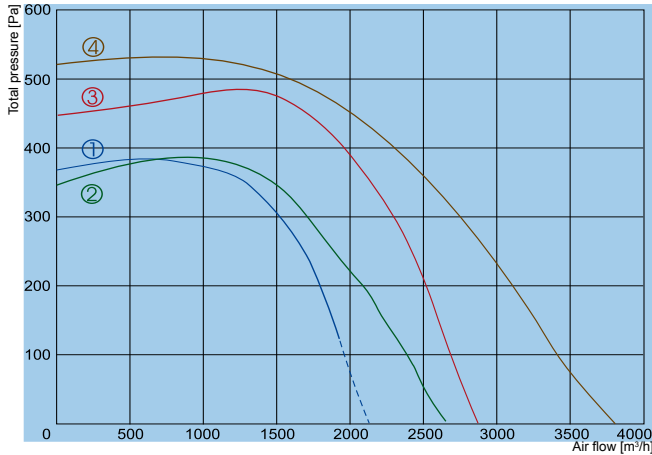
- ① VR 120-2c L1
- ② VR 140-2d L1
- ③ VR 160-2a L1
- ④ VR 160-2b L1

		VR120-2c L1	VR 140-2d L1	VR 160-2a L1	VR 160-2b L1
Voltage/Frequency	[V/Hz]	230/50	230/50	230/50	230/50
Power consumption	[kW]	89	185	210	300
Current	[A]	0,40	0,80	0,92	1,30
Speed	[min ⁻¹]	1880	2120	1850	2150
Max. airflow	[m ³ /h]	370	592	575	620
Max. air temperature	[°C]	50	60	40	40
Total sound pressure level at 1 m	[dBA]	61	67	70	73
Speed controller		TGRV 1,5	TGRV 1,5	TGRV 1,5	TGRV 1,5
Weight	[kg]	2,20	2,50	2,75	4,05
Wiring diagram		No. 3	No. 3	No. 3	No. 3
Protection class:	motor	IP-44	IP-44	IP-44	IP-44
	terminal box	IP-55	IP-55	IP-55	IP-55



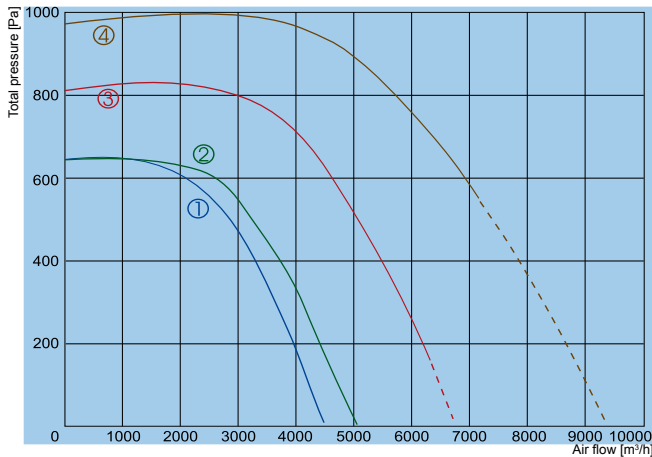
- ① VR 200-4 L1
- ② VR 200-4 L3
- ③ VR 225-4 L1
- ④ VR 225-4 L3

		VR 200-4 L1	VR 200-4 L3	VR 225-4 L1	VR 225-4 L3
Voltage/Frequency	[V/Hz]	230/50	400/50	230/50	400/50
Power consumption	[kW]	0,36	0,31	0,51	0,56
Current	[A]	1,8	0,51	2,3	0,95
Speed	[min ⁻¹]	1180	1230	1250	1270
Max. airflow	[m ³ /h]	1075	1092	1650	1665
Max. air temperature	[°C]	40	70	40	40
Total sound pressure level at 1 m	[dBA]	62	60	63	62
Speed controller		TGRV1,5 / MTY2	TGRT1	TGRV3 / MTY4	TGRT1
Weight	[kg]	7,8	7	9	9
Wiring diagram		No.1	No.2	No.1	No.2
Protection class:	motor	IP-54	IP-54	IP-54	IP-54
	terminal box	IP-55	IP-55	IP-55	IP-55



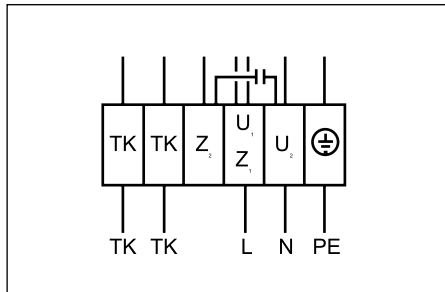
- ① VR 250-4 L1
- ② VR 250-4 L3
- ③ VR 280-4 L1
- ④ VR 280-4 L3

		VR 250-4 L1	VR 250-4 L3	VR 280-4 L1	VR 280-4 L3
Voltage/Frequency	[V/Hz]	230/50	400/50	230/50	400/50
Power consumption	[kW]	0,69	0,93	1,15	1,5
Current	[A]	3,0	1,9	5,1	2,6
Speed	[min ⁻¹]	1190	1380	1210	1310
Max. airflow	[m ³ /h]	1885	2645	2885	3805
Max. air temperature	[°C]	40	50	40	40
Total sound pressure level at 1 m	[dBA]	66	64	69	65
Speed controller		TGRV4 / MTY4	TGRT2	TGRV7	TGRT3
Weight	[kg]	14,5	14,5	20	19,4
Wiring diagram		No. 1	No. 2	No. 1	No. 2
Protection class:	motor	IP-54	IP-54	IP-54	IP-54
	terminal box	IP-55	IP-55	IP-55	IP-55



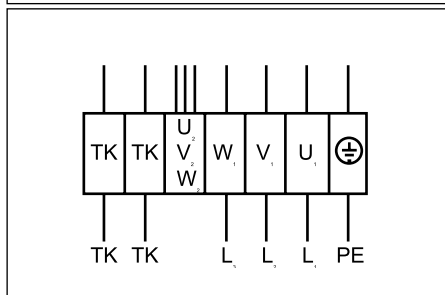
- ① VR 315-4 L1
- ② VR 315-4 L3
- ③ VR 355-4 L3
- ④ VR 400-4 L3

		VR 315-4 L1	VR 315-4 L3	VR 355-4 L3	VR 400-4 L3
Voltage/Frequency	[V/Hz]	230/50	400/50	400/50	400/50
Power consumption	[kW]	2,5	2,5	3,7	5
Current	[A]	11	4,1	6	8,1
Speed	[min ⁻¹]	1340	1300	1320	1330
Max. airflow	[m ³ /h]	4475	5060	6320	7150
Max. air temperature	[°C]	40	40	40	40
Total sound pressure level at 1 m	[dBA]	58	68	73	75
Speed controller		TGRV14	TGRT5	TGRT7	TGRT11
Weight	[kg]	30,7	26	40	-
Wiring diagram		No. 1	No. 2	No. 2	No. 2
Protection class:	motor	IP-54	IP-54	IP-54	IP-54
	terminal box	IP-55	IP-55	IP-55	IP-55



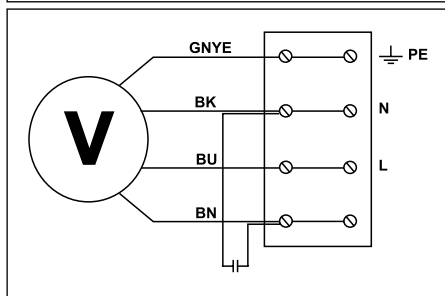
Wiring diagram No. 1 (1~230V)

U₁ = brown
 U₂ = blue
 Z₁ = black
 Z₂ = orange
 TK = white
 PE = yellow-green



Wiring diagram No. 2 (3~400V)

U₁ = brown
 U₂ = red
 V₁ = blue
 V₂ = grey
 W₁ = black
 W₂ = orange
 TK = white



Wiring diagram No. 3 (1~230V)

GNYE - green-yellow
 BK - black
 BU - blue
 BN - brown